



GAT MONTHLY MEMBERSHIP PROGRESS REPORT

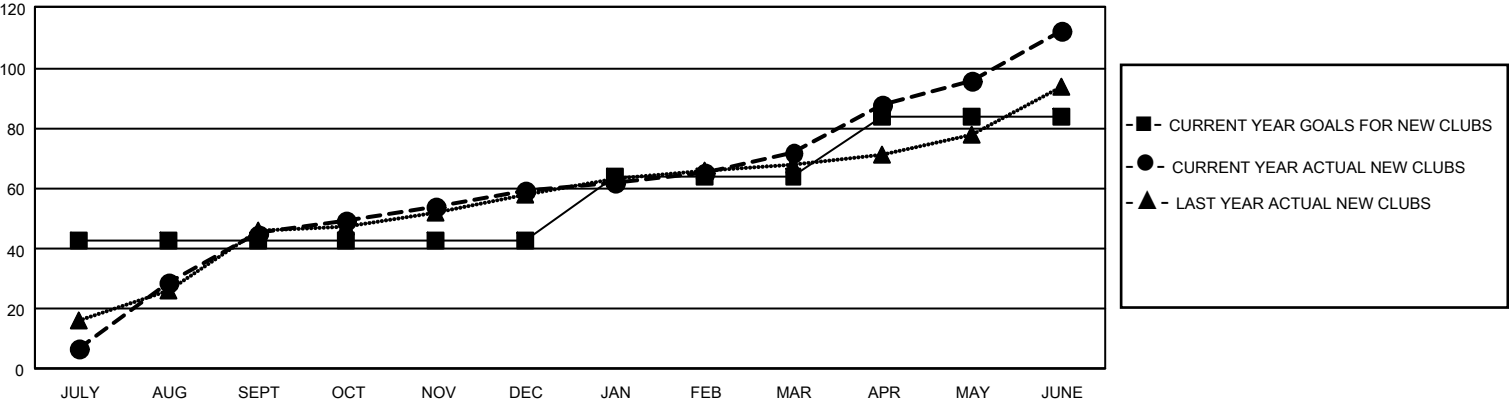
Results as of: 6/30/2025

GMT Constitutional Area 6 - I, Group F

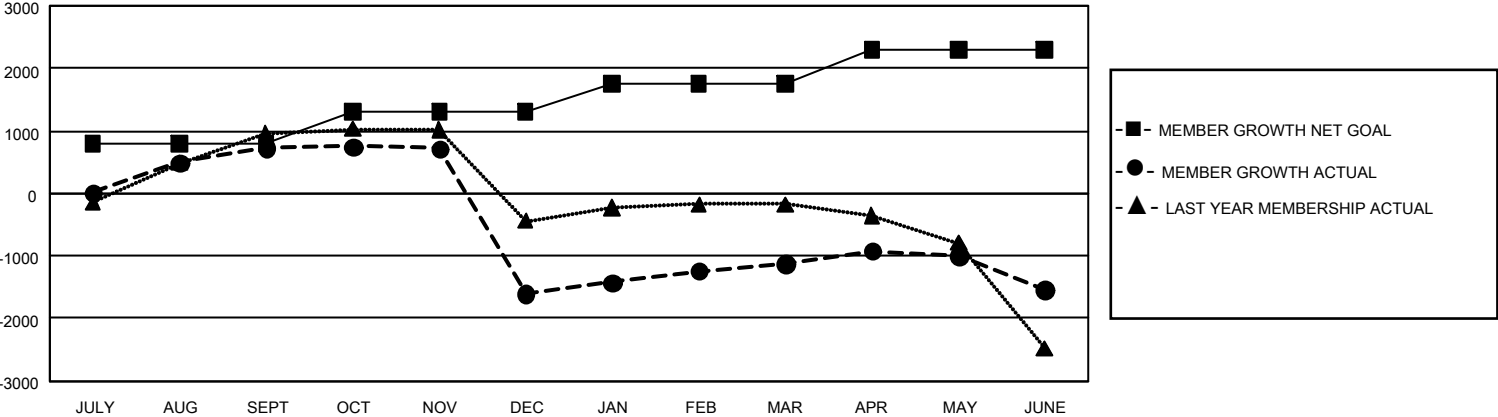
REPORT DOES NOT INCLUDE CLUBS IN UNDISTRICTED AREAS.

Clubs				Members			
RESULTS FOR 2024-2025				RESULTS FOR 2024-2025			
QUARTER	NEW CLUB GOAL	NEW CLUBS	DROPPED CLUBS	QUARTER	MEMBER GROWTH NET GOAL	MEMBER GROWTH ACTUAL	DROPPED MEMBERS ACTUAL (including transfers)
JULY/AUG/SEPT	129	45	12	JULY/AUG/SEPT	790	2,017	1,034
OCT/NOV/DEC	0	14	108	OCT/NOV/DEC	515	1,083	3,324
JAN/FEB/MAR	63	13	15	JAN/FEB/MAR	442	1,431	554
APR/MAY/JUNE	60	40	10	APR/MAY/JUNE	545	4,260	3,512

GOALS AND ACTUAL NEW CLUBS CUMULATIVE



GOALS AND ACTUAL MEMBERS CUMULATIVE



DROPPED CLUBS: 145		732 CLUBS OF 1,290 ADDED 1 OR MORE NEW MEMBERS	<u>GENDER DISTRIBUTION</u>	
<u>DROPPED MEMBERS</u> DECEASED 111 CLUB CANCELLED 2,245 OTHER 6,038 <hr/> TOTAL 8,394			MALE	22,012 (73.25%)
			FEMALE	8,026 (26.71%)
			NON BINARY	0 (0.00%)
			PREFER NOT TO ANSWER	11 (0.04%)
		CLICK HERE FOR CUMULATIVE MEMBERSHIP DATA	TOTAL FAMILY UNIT MEMBERS	10,904
			FAMILY MEMBERS PAYING HALF DUES	6,582